

Step 5

If set to *master* mode, set your *Time Zone* using the dropdown box and press *save*.

If set to *Slave* mode, there is no option for time zone. Press *save*.



NetConnect Quick Setup

How To' videos

Advanced Setup

IMPORTANT: Only one NetConnect in your system should be in MASTER mode.
If you are using a S7 NetServer then all NetConnects must be set to SLAVE mode.

NetConnect Mode: MASTER

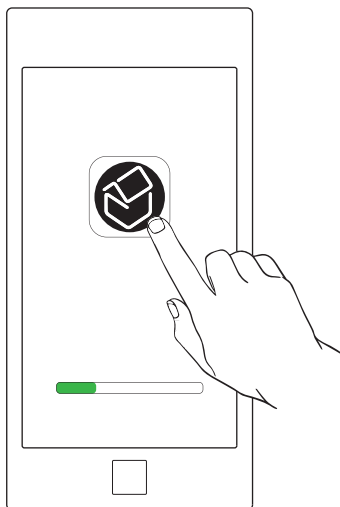
Zone Name: Kitchen

Timezone: UTC (BST)

Save

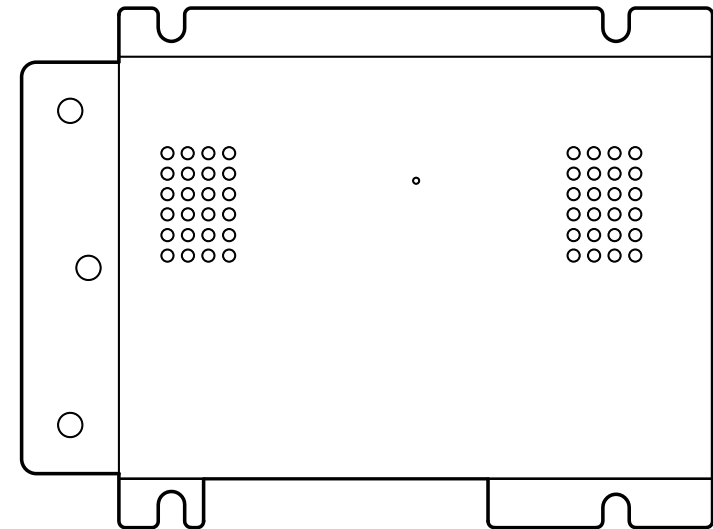
Step 6

Download and install *Systemline 7 app* on your device. You should see your renamed NetConnect is ready to use.



Quick start instructions

Advanced instructions available on the *systemline* website: www.systemline.co.uk



S7 NetConnect

S7 NetConnect - Hi-Res Network Amplifier

NetConnect pack contents

- 1 x NetConnect amp
- 2 x IMO speaker connectors
- 1 x Power supply
- 1 x Mains cable
- 1 x Quick start instructions

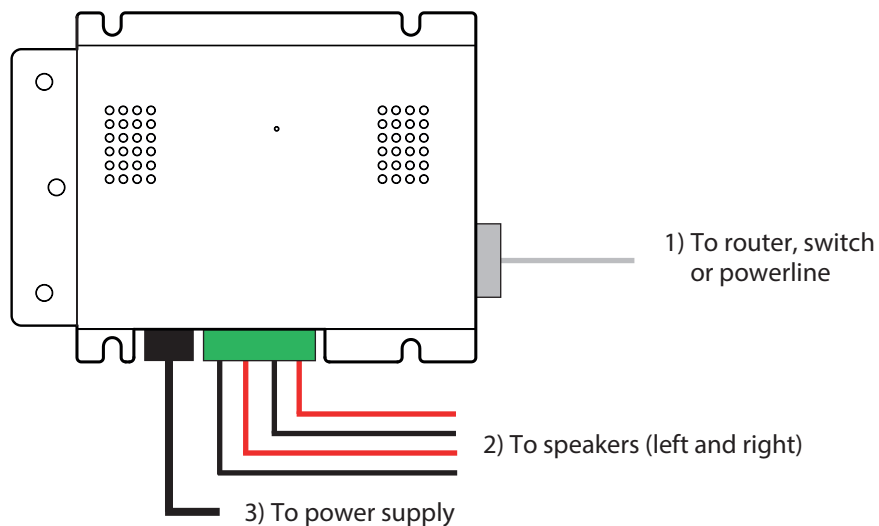
Description

This quick start guide is for a system using NetConnects only. If you are using an S7 NetServer all NetConnects should be set to *slave* mode.

Step 1

Make connections in order shown below.

During setup only one NetConnect should be connected to the network.



Step 2

Open a web browser and type `//netconnect` into the address bar to open quick setup.



Step 3

Set NetConnect mode to *master* using drop down box.

Only one NetConnect in your system should be set to master mode. Set the rest to *slave* mode.



NetConnect Quick Setup

'How To' videos

Advanced Setup

IMPORTANT: Only one NetConnect in your system should be in MASTER mode. If you are using a S7 NetServer then all NetConnects must be set to SLAVE mode.

NetConnect Mode: MASTER

Step 4

Enter your *Zone Name* into the box (Kitchen, Dining etc).



NetConnect Quick Setup

'How To' videos

Advanced Setup

IMPORTANT: Only one NetConnect in your system should be in MASTER mode. If you are using a S7 NetServer then all NetConnects must be set to SLAVE mode.

NetConnect Mode: MASTER

Zone Name: Kitchen