



Operating Manual

PRL-1202 / PRL-1204

MULTICHANNEL AMPLIFIER 2/4



Please follow the instructions in this manual to obtain the optimum results from this unit.
We also recommend that you keep this manual handy for future reference

Check our website for any updates of this manual: www.artsound.be

House of Music nv
Ronse, Belgium
www.artsound.be
Tel. +32 9 380 81 80
Fax. +32 9 386 12 35
info@artsound.be

Table of contents

1. Safety precautions	3
2. General description	4
3. Characteristics	4
4. Nomenclature and functions	5
4.1 Front panel	5
4.2 Rear panel	5
5. Use cases	6
8. Specifications	7

1 Safety precautions.

- Be sure to read the instructions in this section carefully before use.
- Make sure to observe the instructions in this manual as the conventions of safety symbols and messages regarded as very important precautions are included.
- We also recommend you keep this instruction manual handy for future reference.

Warnings and safety.

Safety Symbol and Message Conventions.

Safety symbols and messages described below are used in this manual to prevent bodily injury and property damage, which could result from mishandling. Before operating your product, read this manual first and understand the safety symbols and messages so you are thoroughly aware of the potential safety risk.



Warning

Indicates a potentially hazardous situation which, if mishandled, could result in death or serious personal injury.



Caution

Indicates a potentially hazardous situation which, if mishandled, could result in moderate or minor personal injury, and/or property damage.

Warning.

When Installing the Unit.

- Do not expose the unit to rain or an environment where it may be splashed by water or other liquids, as doing so may result in fire or electric shock.
- Use the unit only with the voltage specified on the unit. Using a voltage higher than that which is specified may result in fire or electric shock.
- Do not cut, kink, otherwise damage nor modify the power supply cord. In addition, avoid using the power cord in close proximity to heaters, and never place heavy objects -- including the unit itself -- on the power cord, as doing so may result in fire or electric shock.
- Be sure to replace the unit's terminal cover after connection completion. Because high voltage is applied to the speaker terminals, never touch these terminals to avoid electric shock.
- Be sure to ground to the safety ground (earth) terminal to avoid electric shock. Never ground to a gas pipe as a catastrophic disaster may result.
- Avoid installing or mounting the unit in unstable locations, such as on a rickety table or a slanted surface. Doing so may result in the unit falling down, causing personal injury and/or property damage.

When the Unit is in Use.

- Should the following irregularity be found during use, immediately switch off the power, disconnect the power supply plug from the AC outlet and contact your nearest ArtSound dealer. Make no further attempt to operate the unit in this condition as this may cause fire or electric shock.
 - If you detect smoke or a strange smell coming from the unit.
 - If water or any metallic object gets into the unit
 - If the unit falls, or the unit case breaks
 - If the power supply cord is damaged (exposure of the core, disconnection, etc.)
 - If it is malfunctioning (no tone sounds.)
- To prevent a fire or electric shock, never open nor remove the unit case as there are high voltage components inside the unit. Refer all servicing to your nearest ArtSound dealer.
- Do not place cups, bowls, or other containers of liquid or metallic objects on top of the unit. If they accidentally spill into the unit, this may cause a fire or electric shock.
- Do not insert nor drop metallic objects or flammable materials in the ventilation slots of the unit's cover, as this may result in fire or electric shock.

Caution.**When Installing the Unit.**

- Never plug in nor remove the power supply plug with wet hands, as doing so may cause electric shock.
- When unplugging the power supply cord, be sure to grasp the power supply plug; never pull on the cord itself. Operating the unit with a damaged power supply cord may cause a fire or electric shock.
- When moving the unit, be sure to remove its power supply cord from the wall outlet. Moving the unit with the power cord connected to the outlet may cause damage to the power cord, resulting in fire or electric shock. When removing the power cord, be sure to hold its plug to pull.
- Do not block the ventilation slots in the unit's cover. Doing so may cause heat to build up inside the unit and result in fire.
- Avoid installing the unit in humid or dusty locations, in locations exposed to the direct sunlight, near the heaters, or in locations generating sooty smoke or steam as doing otherwise may result in fire or electric shock.

When the Unit is in Use.

- Do not place heavy objects on the unit as this may cause it to fall or break which may result in personal injury and/or property damage. In addition, the object itself may fall off and cause injury and/or damage.
- Make sure that the volume control is set to minimum position before power is switched on.
- Loud noise produced at high volume when power is switched on can impair hearing.
- Do not operate the unit for an extended period of time with the sound distorting. This is an indication of a malfunction, which in turn can cause heat to generate and result in a fire.
- Contact your ArtSound dealer as to the cleaning. If dust is allowed to accumulate in the unit over a long period of time, a fire or damage to the unit may result.
- If dust accumulates on the power supply plug or in the wall AC outlet, a fire may result. Clean it periodically. In addition, insert the plug in the wall outlet securely.
- Switch off the power, and unplug the power supply plug from the AC outlet for safety purposes when cleaning or leaving the unit unused for 10 days or more. Doing otherwise may cause a fire or electric shock.

An all-pole mains switch with a contact separation of at least 3 mm in each pole shall be incorporated in the electrical installation of the building.

Due to product upgrades, while some of the features and specification in the user manual does not match the actual functions, sorry for any inconvenience and thanks for your kind understanding!

2. General description.

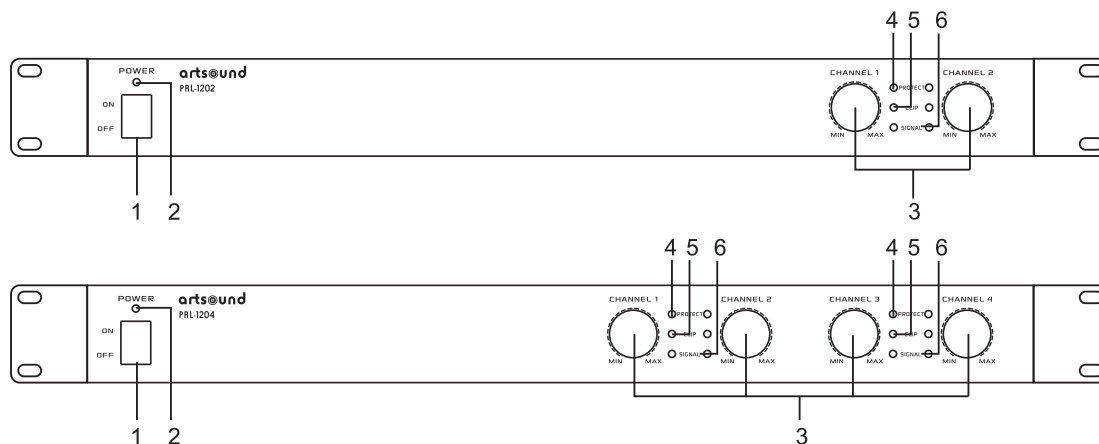
Professional 2/4-channel amplifier in a highly compact 19" 1U housing. Class D amplification with high efficiency warrants high power. Low distortion in combination with very low heat development.

3. Characteristics

- 2x or 4x 120W RMS 8Ω (200W/4Ω), class D
- Protect, clip & signal LED
- XLR combo audio jack inputs/outputs
- Selection stereo, parallel or bridge configuration for extra flexibility
- Ultra-efficient switched-mode power supply & noiseless operation
- Protection against short circuit, DC voltage, overheating and overload
- Peak limiter prevents distortion of the signal
- Outputs through wire clamp connections or Speakon

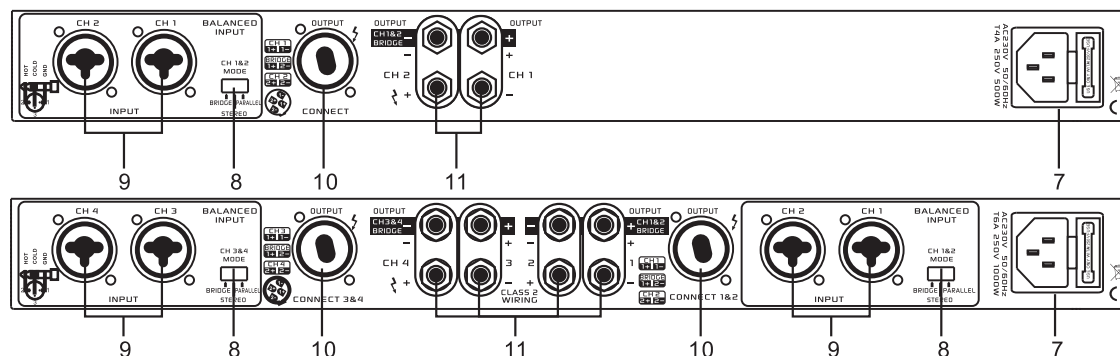
4. Nomenclature and functions.

4.1 Front panel



- 1. ON/OFF**
- 2. LED indicator power**
- 3. Volume controls channels 1-2/1-4**
 - This controls the input sensitivity per channel.
 - Channel 2 (PRL-1202) – Channel 2 & 4 (PRL-1204) are NOT used when the amplifier is in the BRIDGE or PARALLEL mode
- 4. LED indicator safety (short circuit or overheating)**
- 5. LED indicator overload**
- 6. LED indicator signal detection**

4.2 Rear panel



- 7. Power supply**
- 8. Selection button BRIDGE/STEREO/PARALLEL**
 - BRIDGE:** The mono signal on input channel 1 and/or 3 are used to control the combined BRIDGE output. This setting produces more power.
 - STEREO:** Channels 1+2/3+4 are sent to their corresponding outputs.
 - PARALLEL:** The mono signal on input channel 1 and/or 3 is used to control both outputs of channels 1+2/3+4.
- 9. XLR combo jack (6.3mm) input**
 - Balanced (XLR) or unbalanced (1/4") line signal input
- 10. Speakon speaker output**
 - Combined speaker output for channels 1+2/3+4
Channel 1: 1+ positive wire, 1- negative wire
Channel 2: 2+ positive wire, 2- negative wire
BRIDGE: 1+ positive wire, 2- negative wire
Repeat for channels 3+4
- 11. Wire clamp connection speaker output**
 - Respect the correct polarity +/- here when connecting the speakers.

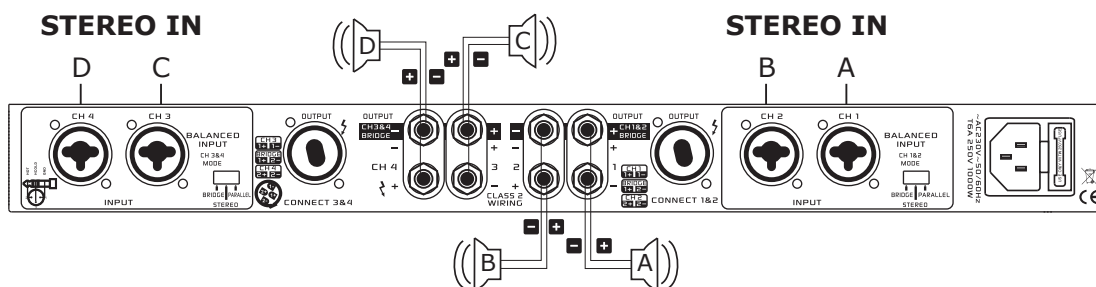
5. Use cases.

5.1 STEREO

Use in which 1/2 stereo outputs (2/4 channels) are controlled.

Power: 2/4x 120W RMS at 8 Ohm / 2/4x 200W RMS at 4 Ohm

- Set the selection button to 'STEREO'
- Connection through SPEAKON (cfr. figure indication 10 back panel)
- Connection through wire clamps (cfr. figure indication 11 back panel)

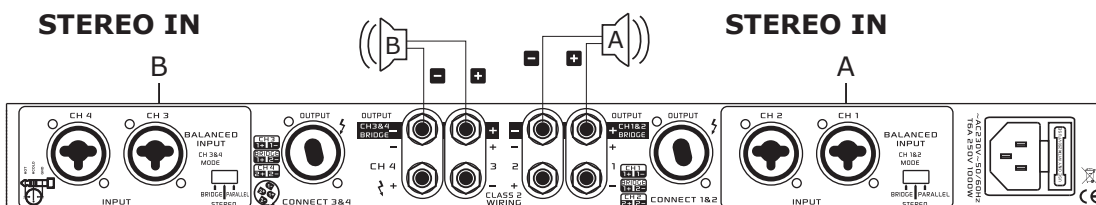


5.2 BRIDGE

Use in which 1 channel (PRL-1202) or 2 channels (PRL-1204) are bridged.

Power: 1x of 2x 400W on 8 Ohm – **Speakers must have an impedance value of 8 Ohm.**

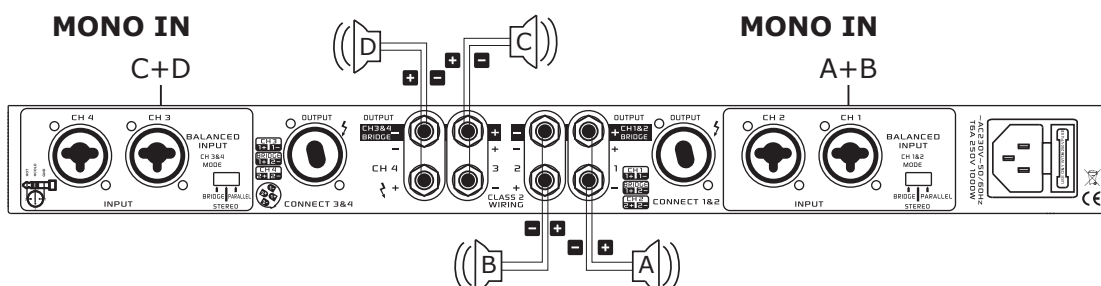
- Set the selection button to 'BRIDGE'
- Connection through SPEAKON (cfr. figure indication 10 back panel BRIDGE)
- Connection through wire clamps (cfr. figure indication 11 back panel BRIDGE)



5.3 PARALLEL

Use in which:

- PRL-1202 mono input controls 1 channel 1+2
- PRL-1204 mono input controls 1 & 3 channels 1+2 and 3+4
- Power: 4x 120W RMS at 8 Ohm/4x 200W RMS at 4 Ohm



6. Specifications.

MODEL PRL-1204	MODEL PRL-1202
4x 120W RMS 8Ohm (200W/40hm), class D	2x 120W RMS 8Ohm (200W/40hm), class D
Alu front panel, 4mm – metal chassis	Alu front panel, 4mm – metal chassis
Protect, clip & signal LED	Protect, clip & signal LED
XLR combo audio jack inputs / outputs	XLR combo audio jack inputs / outputs
Loudspeaker binding posts	Loudspeaker binding posts
Selection switch stereo, parallel and bridge	Selection switch stereo, parallel and bridge
Innovative heatsink with air flow	Innovative heatsink with air flow
Input Sensitivity: 0.775V- 1.0V-1.44V	Input Sensitivity: 0.775V- 1.0V-1.44V
Signal to Noise Ratio: ≥95dB	Signal to Noise Ratio: ≥95dB
Frequency Response: 20Hz - 20KHz	Frequency Response: 20Hz - 20KHz
THD (10% Rated Power) : <0.1%	THD (10% Rated Power) : <0.1%
Class D Power Amplifier CircuitT.H.D.: <0.1%	Class D Power Amplifier CircuitT.H.D.: <0.1%
Power Supply: 220V/50Hz Selector Switch	Power Supply: 220V/50Hz Selector Switch
Dimension(mm): 483x250x44mm (19"/1U)	Dimension(mm): 483x250x44mm (19"/1U)
Weight: 3.5Kgs	Weight: 3.8Kgs

artsound

smart solutions in audio

**Discover the complete ArtSound
range at www.artsound.be**

House Of Music NV
Ronse, Belgium
www.artsound.be
Tel. +32 9 380 81 80
Fax. +32 9 386 12 35
info@artsound.be