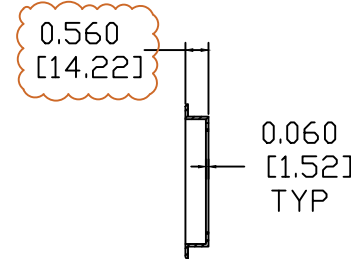
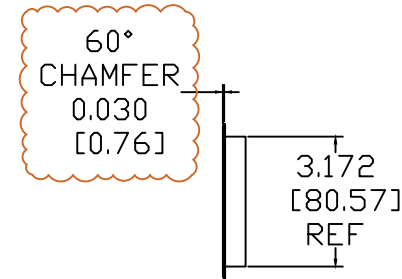
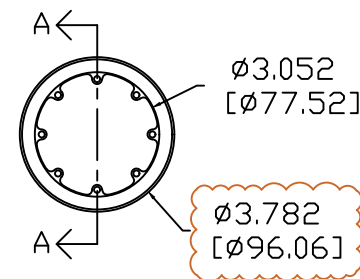
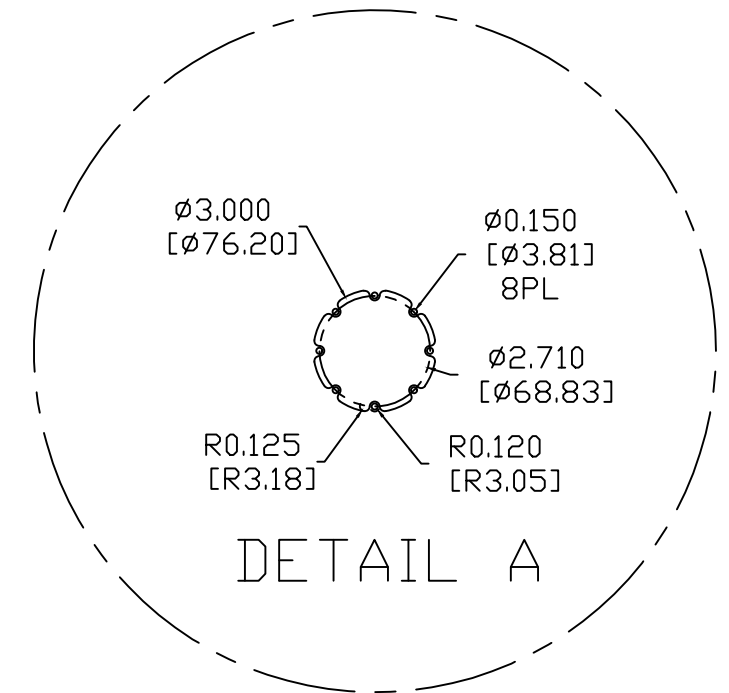
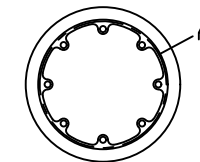


REVISIONS				
ECN	REV.	DESCRIPTION	DATE	APPROVED
20021	A	RELEASE FOR PRODUCTION	04-08-20	
20032	B	LIP RESIZED TO $\phi 3.782$ ", CHAMFER ADDED HEIGHT INCREASED TO 0.560"	07-08-20	

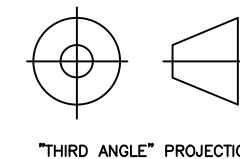


SECTION A-A



NOTES:

- 1: MATERIAL - 0.060" THICK 5052 ALUMINUM
UNLESS OTHERWISE SPECIFIED
- 2: FINISH - GLOSS WHITE
UNLESS OTHERWISE SPECIFIED



PROPRIETARY INFORMATION		THE DESIGNS, INFORMATION, AND DATA CONTAINED HEREIN ARE PROPRIETARY AND ARE SUBMITTED IN CONFIDENCE, AND SHALL NOT BE DISCLOSED, USED OR DUPLICATED IN WHOLE OR IN PART, FOR ANY PURPOSES WHATSOEVER, WITHOUT THE PRIOR WRITTEN PERMISSION OF JAMES LOUDSPEAKER LLC, 2185 PARK PL, MINDEN, NV 89423. THIS LEGEND SHALL BE MARKED ON ANY REPRODUCTIONS HEREOF IN WHOLE OR IN PART. RECEIPT OF THIS DOCUMENT SHALL BE DEEMED TO BE AN ACCEPTANCE OF THE CONDITIONS SPECIFIED HEREIN.	
JAMES LOUDSPEAKER		63SA-7H0	
1/2" ROUND 3" RETRO-FIT TRIM KIT		P/N: SA63-3R-RF DWR #: 200408-S101	
REVISED BY: S. LOESCH		DRAWN BY: S. LOESCH FILE:	
DATE: 04-08-20		SCALE:	
APPROVED:		DRAFTING APPROVED:	
DO NOT SCALE DRAWING		DRAWING NOT TO BE USED FOR CNC	
TOLERANCES: ANG: $\pm .5^\circ$ FRACT: $\pm 1/32$		DECIMALS: .XX $\pm .01$.XXX $\pm .005$	
REVISION: B		SHEET 1 OF 1	