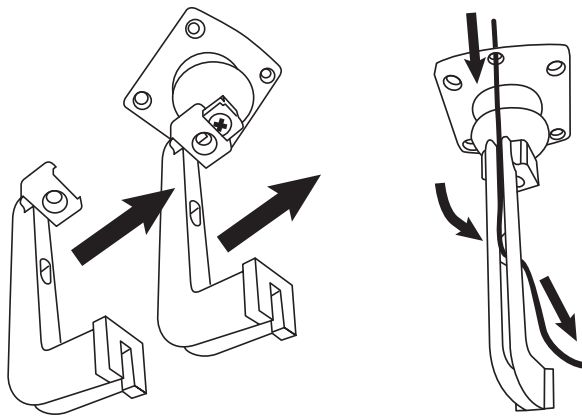


Optional: Using the compatible ceiling brackets

- Remove the wall bracket attached to the satellite loudspeaker.
- Slide the end of the wall bracket into the recess on the ceiling bracket.
- The ceiling bracket may be slid into the recess on the satellite speaker.
- The loudspeaker cable may be hidden in the hollow space in the ceiling bracket.
- Secure this bracket by using the rubber end piece on the satellite speaker.



Warranty

2 years after date of purchase for normal use.
Invoice terms and conditions apply.

artsound
smart solutions in audio



Discover the complete ArtSound range at www.artsound.be

House Of Music nv
Tel. +32 9 380 81 80
Fax. +32 9 386 12 35
info@artsound.be

artsound

Operating Manual
Tutto2.1

STEREO LOUDSPEAKER SET



CE

	Tutto2.1
max power Ω	120W
max power (100V)	30 - 60W
frequency range	20 - 18kHz
options	possible to connect 2 extra satellites
	SUBWOOFER
woofer	dual-chamber subwoofer
bass reflex	yes
dim. (h x w x d)	400 x 168 x 400mm
weight / piece	5,9kg
housing	MDF
colour	black or white
extra	wall bracket, 4 feet
▲ Satellite speakers may only be used in combination with the Tutto1 subwoofer	
	SATELLITE SPEAKERS
mid-high	3" paper conus
dim. (h x w x d)	100 x 90 x 80mm
weight / piece	0,4kg
housing	ABS, rubber finish
colour	black or white
extra	wall bracket
options	ceiling bracket

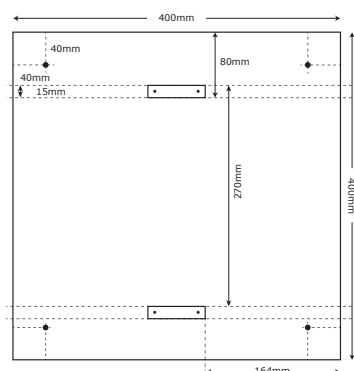
Congratulations on your purchase of this stereo loudspeaker set.
Follow the instructions in this document to get the best possible results from this device.
We recommend that you keep these instructions for future use.

Check our website for any updates of this manual:
www.artsound.be

Packaging contents

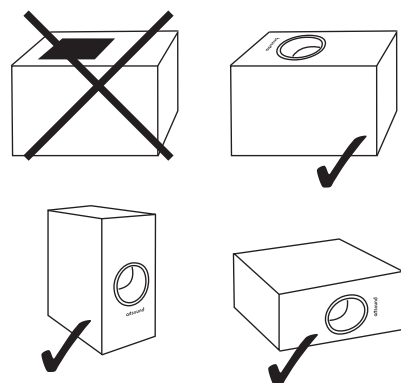
- 1x subwoofer (Tutto1)
- 2x satellite loudspeakers (Tutto2)
- 2x wall brackets
- 1x wall bracket for subwoofer
- 4x spacer feet for wall mounting
- 4x bases to use as free-standing speakers
- 2x 8m loudspeaker cables
- 2x shrink sleeves for satellite loudspeakers
- screws for wall mounting
- 1x template for wall bracket subwoofer
- 1x cross screwdriver

FIG 1
Template for wall bracket subwoofer



Installing the subwoofer

- It is preferable to place the subwoofer close to the walls that enclose the space. Make sure that the bass tube is unobstructed.
- A corner set-up will generally result in a higher reproduction of lower tones.
- The subwoofer module may be placed in a vertical as well as horizontal position. However, never place this in a position which causes the connections to face upwards.
- The wall bracket (included) also provides the option for mounting the device on the wall. The template included indicates the position for mounting the wall bracket to the module. Note: failure to follow the size indications provided can cause permanent damage to the subwoofer.



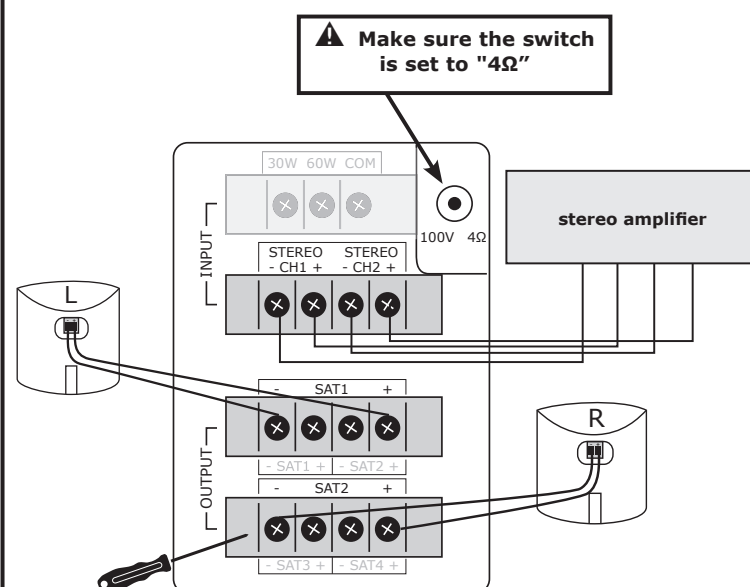
! After completing the installation described above, please tighten all of the screws in order to get optimum enjoyment from this loudspeaker set. The cover plate (included) must be replaced in order to ensure your loudspeaker system works properly.

Naturally, every position involves making a compromise between acoustic performance and aesthetic integration of the subwoofer in the interior. It is advisable to conduct several placement tests for the subwoofer to determine which position will produce the best listening results. Just like other listening tests, it is best to use audio material that you are familiar with, and which has sufficient bass content.

Setting up the satellite loudspeakers

- The two satellite loudspeakers enable every user to create the most ideal stereo situation.
- When using the loudspeaker set in rooms with higher than average ceilings (> 3 metres), it is recommended to mount the satellite loudspeakers at a height of approximately two metres above the ground.
- The wall brackets enable you to rotate the loudspeakers 360° to create the most appropriate sound direction.
- Please always mount the wall brackets using the screws provided.

STEREO CONNECTION 4 Ω (Low impedance)



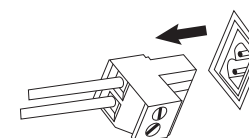
Connecting the amplifier to the subwoofer

Be sure to take into account the polarity of both the amplifier output as well as the indication on the bass module.

- The L output channel may be connected to the "CH1" indicator.
- The R output channel may be connected to the "CH2" indicator.

Connecting satellite loudspeakers to the subwoofer

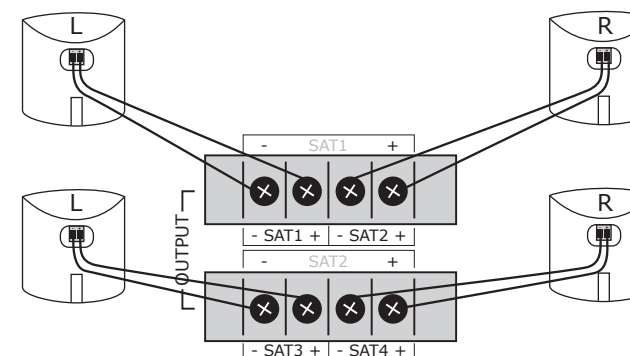
- Remove the phoenix connector from the satellite loudspeaker.
- Connect the loudspeaker cables to this connector, following the indicated polarity.



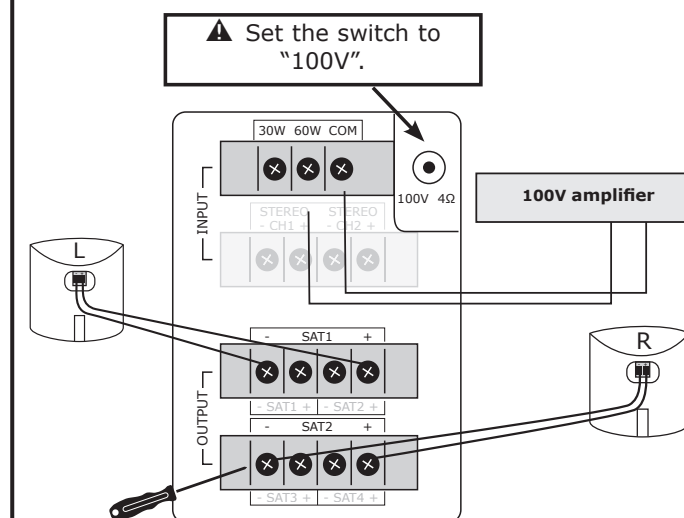
- The left satellite speaker may then be connected to the top SAT1 indicator, the right satellite speaker to the lower SAT2 indicator.

Connecting 4 satellite loudspeakers to the subwoofer (optional)

When connecting two pairs of satellite loudspeakers, the marked SAT1 through SAT4 indicators must be used. Also be sure to follow the indicated polarity.



CONNECTION 100V (high impedance)



Connecting the amplifier to the subwoofer

This loudspeaker set offers power options of 30W or 60W.

- Set the switch to "100V".
- Connect the 100V output (+) of the amplifier to the 30W or 60W connector depending on the desired level of power.
- Connect the COM output (-) of the amplifier to the COM connector on the subwoofer.

If desired, several loudspeaker sets may be connected to one another. In this situation, several subwoofers may be daisy-chained provided you follow the indications for the 30W/60W and COM connections.

However, make sure you always mount these at least six metres apart in order to guarantee good results.

Depending on your personal preference, extra adjustments to the bass from the amplifier may be desirable.

Connecting satellite loudspeakers to the subwoofer

see 'stereo connection 4Ω'