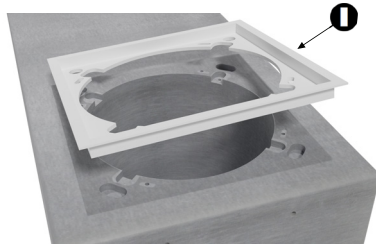


## 10 Attach the finishing trim kit

Fig. 15



There are six trim kits available to choose from



Fig. 17

For 1/2" Drywall omit spacer (a)  
For 5/8" Drywall use spacer (b)  
If the drywall is in excess of 5/8" add additional 1/8" spacers as needed

## Attach the finishing trim kit P/N SAQ853-SP-0.125

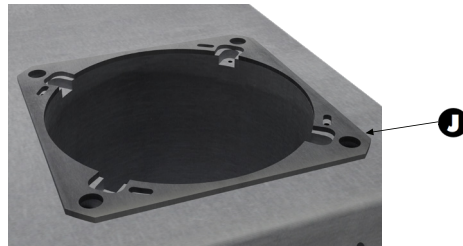


Fig. 16



Fig. 18



Fig. 19

## 11 Install foam dust guard.

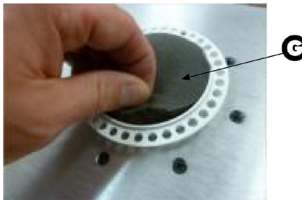


Fig. 20

## 12 Recommend testing sub to assure all components are working.

## 13 Drywall, tape, mud, etc.

## 14 Safely store the supplied grille for the final assembly, If you also received the SA853Q-9-MOD module, store this as well.

## 15 If you received a SA853Q-9-MOD preconstruction assembly, be sure to order the SA853Q-9-MOD module when ready for finishing.



Small Aperture  
Installation  
Video



Trim Kit  
Finishing  
Playlist

\*SA853Q-9 Sensitivity: 87dB@2.83V/1M

Products suitable for use in  
dry outdoor environments

# SA853Q-9

Installation guide for the SA853Q-9 In-Ceiling Small Aperture® Speaker

## Tools Required:

- 1) #2 Phillips screwdriver or drill with #2 Phillips drill bit
- 2) Straight edge or level
- 3) Wood or drywall screws

## Parts List: Supplied

- A 1 - SA853Q-9
- B 2 - Mounting Brackets
- C 4 - 8-32 x 1/2 Pan Head Machine Screws
- D 4 - #8 Lock Washers
- E 4 - #8 Flat Washers
- F 4 - 6/32 Course Head Screws
- G 1 - Foam Dust Guard

## Parts List: Supplied by Installer

- H 4 - 1.25" Wood or drywall screws

## Parts: Ordered Separately

- I 1 - Trim Kit
- J Spacer Ring(s)

## 1 Assemble the parts

The brackets (Part No. SA-BRKT-11-22) are designed for 16" On-center constructions, however can be adjusted to accommodate construction from 11" to 22.5" joist spacing (Fig. 1).

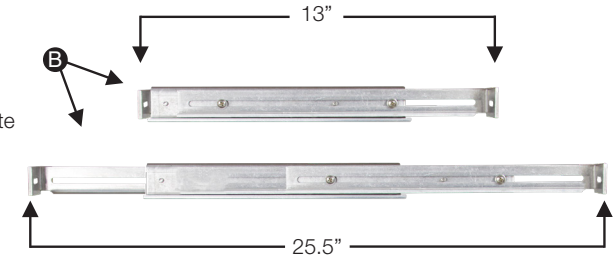


Fig. 1

## 2 Attach the brackets B to the speaker using the supplied 8/32 screws C lock washers D & flat washers E.

Tighten these screws just enough to allow movement for adjustment during installation.

Note: brackets can be mounted to either the sides of the ends of the speaker enclosure for added installation flexibility.

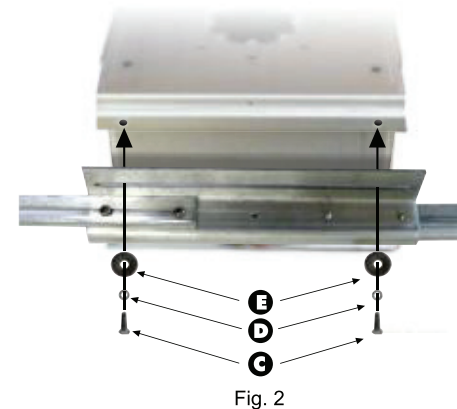


Fig. 2



Fig. 3

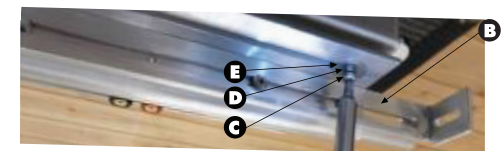


Fig. 4

# SA853Q-9

Installation guide for the SA853Q-9 In-Ceiling Small Aperture® Speaker

*James*  
LOUDSPEAKER

## 3 Mount temporary holders to joists

Cut a couple of 2 x 4s or 1 x 2s, a few inches wider than the ceiling joists. Then with a couple of drywall screws, mount the temporary holders to the joists. (Drywall screws not included).

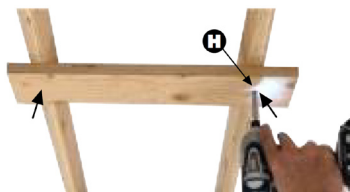


Fig. 5

These will help you hold the speaker up and make the speaker mount flush to the future drywall.

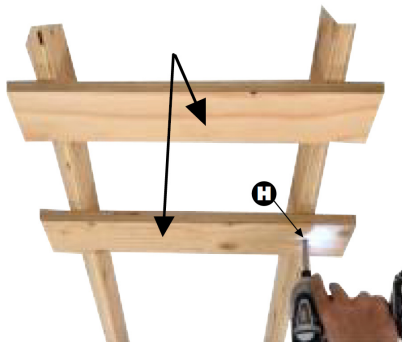


Fig. 6

## 4 Place the speaker on top of the temporary holders

**Note:** The SA63-7 is pictured in steps 2,4,7. Procedures for the SA853Q-9 are identical.

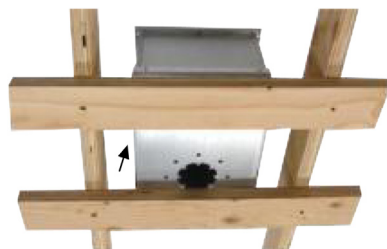


Fig. 7

## 5 Fix the brackets to the joists

Expand the bracket to fit from joist to joist (Fig. 8). Then fix to the joists using a drywall screw (Fig. 9). Make certain the bracket is flush with the joists (Fig. 10). (Drywall screws not included).



Fig. 8



Fig. 9



Fig. 10

## 6 Firmly secure the bracket to the speaker

Tighten screws enough to securely fix the bracket to the speaker enclosure. Be careful not to strip the threads on the brackets (Fig. 11).

You can adjust the side-to-side position of the speaker by sliding the bracket before tightening.



Fig. 11

## 7 Remove the temporary holders from the joists

Remove drywall screws and remove the temporary holders (Fig. 12).



Fig. 12

## 8 Double check that the face of the speaker is plumb with joist

Adjust if needed (loosen the bracket slightly and adjust the speaker's position up or down or as required (Fig. 13).



Fig. 13

## 9 Strip an insert wires into terminals

Minimum 18-gauge wire, heavier gauges for longer wire runs.



Fig. 14

## 10 Install module to complete the installation