

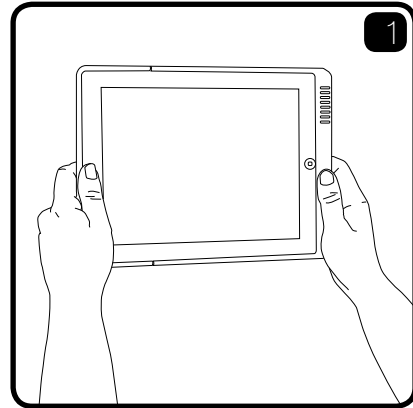
LAUNCHPORT WallStation



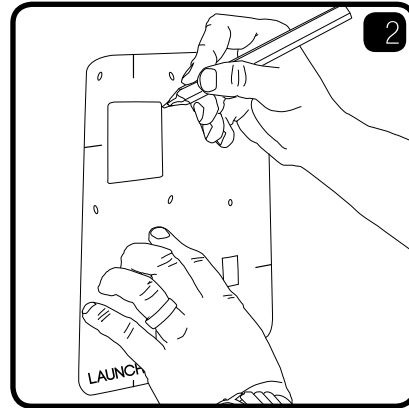
⚡ Turn off power to eliminate risk of shock during installation ⚡
 Watch the installation video at LaunchPort.com/support

Before installation: Ensure selected wall for installation is free of Plumbing, Electrical lines, or any other obstructions.
 Do not install on any non vertical surface.

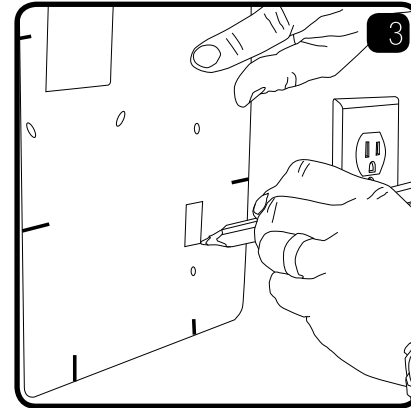
For Advanced Installations: Contact a licensed electrician, handyman or find a custom installer in your area at Cedia.org



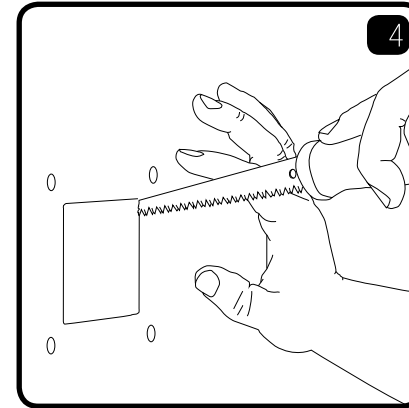
1
 Locate ideal mounting area. Mark center lines of Sleeve on wall for reference. Standard height is 62" from floor to center of screen.



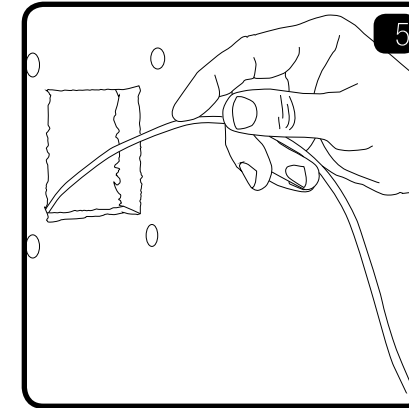
2
 Trace cutout and screw locations. Use a stud finder to locate studs. Use a level to ensure a level trace.



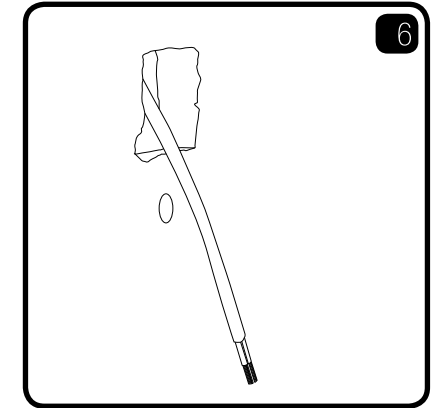
3
 Locate desired area for wall plate and trace cutout and screw locations.
 *NOTE: wall plate must be within 2 feet of a power outlet.



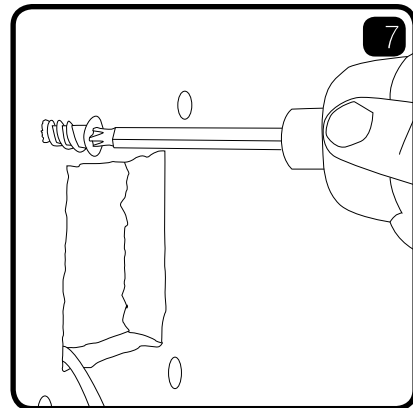
4
 Cut opening for WallStation and wall plate using a drywall saw.



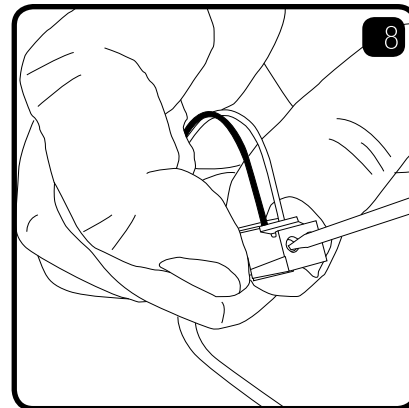
5
 Run supplied wire from WallStation cutout to wall plate cutout.
 *NOTE: if wiring over 6 feet of distance refer to Wire Sizing Chart below.



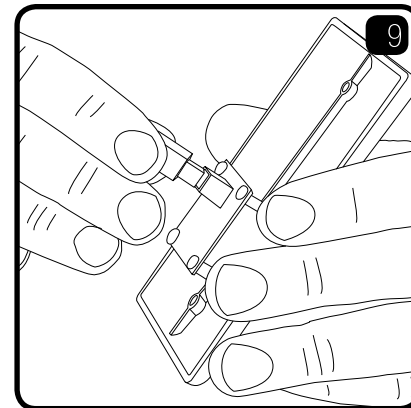
6
 Receive wire through wall plate cutout.
 *NOTE: For help going through a fire-block refer to: LaunchPort.com/support



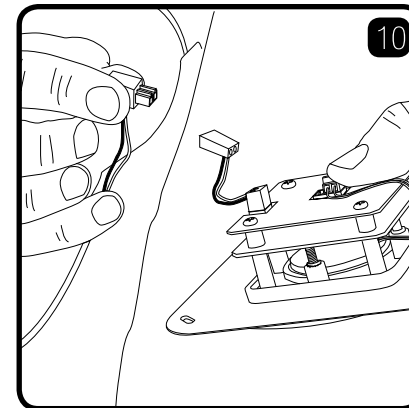
7
 Using a screwdriver, install the anchors for the WallStation and wall plate.
 *NOTE: For best results pre-drill holes.



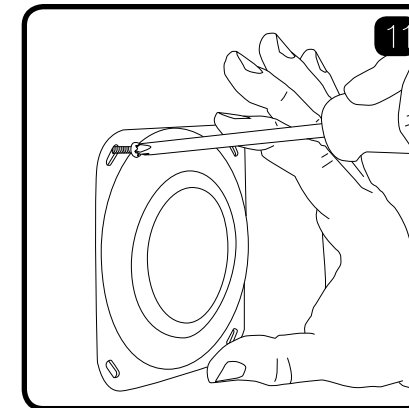
8
 Attach connectors to both ends of the wire. Wires must be installed in exactly the same orientation on both connectors.



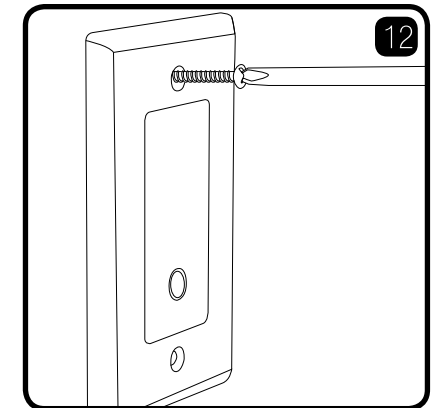
9
 Plug connector into wall plate.



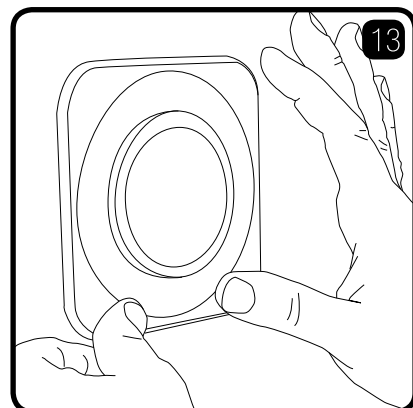
10
 Plug connector into WallStation.



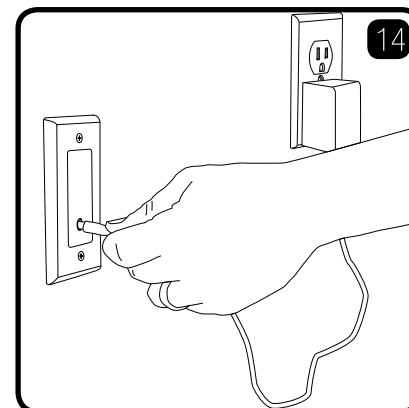
11
 Attach WallStation to the wall using supplied screws.



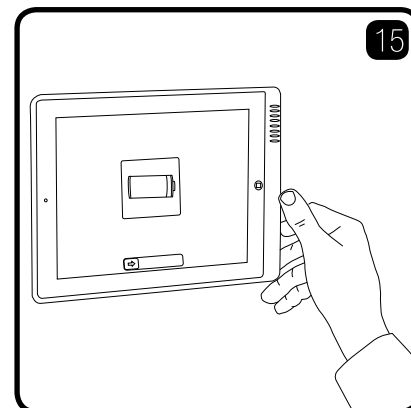
12
 Mount wall plate on wall using supplied screws.



13
 Attach fascia to WallStation.



14
 Plug power adapter into electrical receptical and plug power adapter DC plug into wall plate.
 Only use a LaunchPort power supply with a LaunchPort system.



15
 The WallStation is ready to use. Enjoy!
 Note: The Launchport system may become warm during peak charging circumstances. This is safe and normal operating behavior and will not damage the iPad

TOOLS REQUIRED

Drywall Saw
 #2 Phillips Screwdriver
 Level
 Measuring Tape
 1.5 mm Slotted Screwdriver

RECOMMENDED TOOLS

Stud Finder
 Wire Fishing Tool

BOX CONTENTS

WallStation Assembly
 WallStation Fascia
 wall plate
 Power Supply
 Cut-out Template
 6ft. 18 AWG Electrical Wire
 6 Drywall Anchors
 Mounting Screws for WallStation
 Mounting Screws for wall plate

WIRE SIZING CHART

MAX LENGTH	GAUGE
25'	24 AWG
40'	22 AWG
60'	20 AWG
100'	18 AWG
150'	16 AWG

*Additional wire not included